

Technical specifications – Platform K stage

version 3.0

This document contains the most common information technicians would like to know about our venue. If you got any additional inquiries, do not hesitate to contact us.

The technical staff is looking forward to welcoming you to our venue.

Preproduction contact

We will do our best to contact you minimum 7 days prior to the show date, if you need to talk to us earlier contact our preproduction manager Steen Andersen.

Steen Andersen

Cell: +4551238128

Mail: produktion@platformk.dk

General information

Platform K stage is a venue with a maximum capacity of 180 people.

Load-in address & Parking

Platform K stage only has parking facilities for two vehicles at the load-in dock - if you are traveling with more, please let us know in advance. In addition, if you are traveling with vehicles longer than 8 meters, please advise us.

Load-in dock address:

Madevej 2
8700 Horsens
Denmark
Gps: 55.8693001298426, 9.833445111804265

The loading dock is located behind the building - just follow the signs.

Timesheet

We will make a timesheet for your event in corporation with your production team in advance. As a rule of thumb, we work with the following timesheets:

One band

-4 hours
-3 hours
-2 hours
-1 hours
0 hours

Get-in
Soundcheck
Dinner
Doors
Show

Two bands

-5 hours
-4 hours
-3,5 hours
-3 hours
-2 hours
-1 hours
0 hours
? hours
? hours

Get-in band 1
Soundcheck band 1
Get-in band 2
Soundcheck band 2
Dinner
Doors
Show band 2
Changeover 20 min.
Show band 1

Backstage

The backstage room will be accessible from load-in until 1 hour after load-out.

Facilities (One large room with):

1x Tables and chairs for 12 people
1x Sofa for 3 people
1x Toilet with bath
1x Kitchen with dishwasher

1x Full size mirror
1x Plenty of DK socket power outlets

Load-out

We prefer that you load-out about 10-15 minutes after the show has ended.

Policies

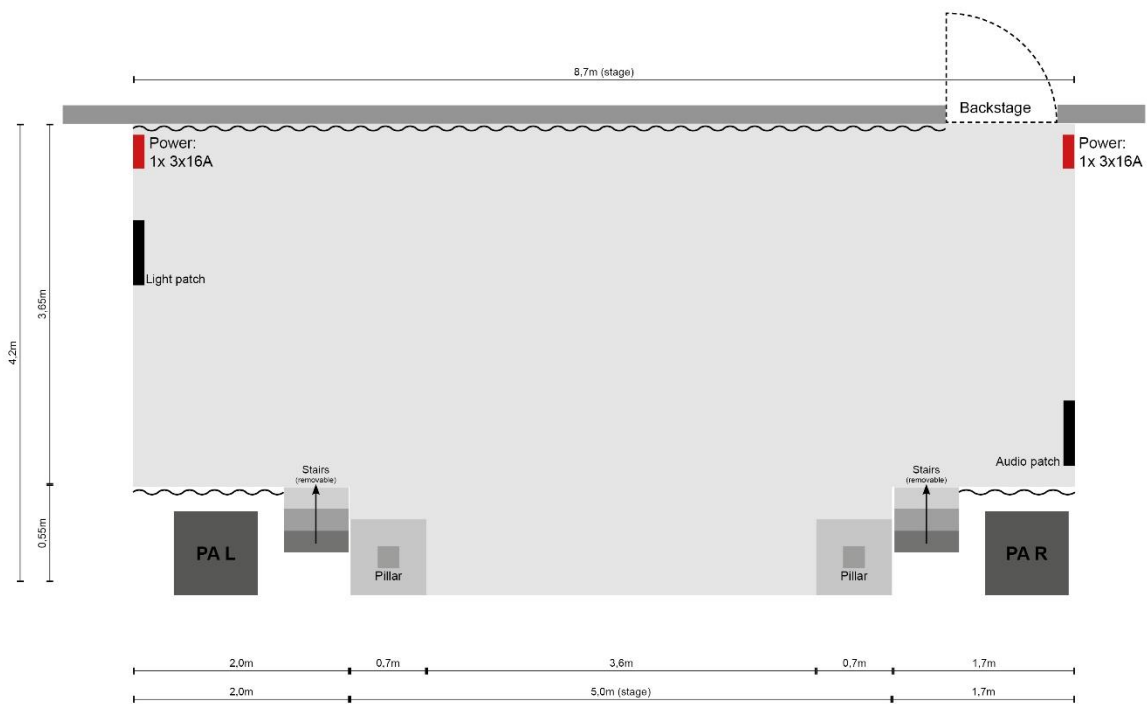
Sound Limit: 103 dbA LEQ over 15 minutes. We provide a 10 EaZy measurement system.

Smoking: According to Danish law, it is illegal to smoke indoors. We have a few outdoors smoking areas; our staff can help you find them.

Stage

The stage at Platform K stage is quite small, but it gives you an opportunity to stand face to face with your audience.

Stage drawing



Stage dimensions (width x depth x height): 8,70m x 4,20m x 0,60m

Stage floor to stage ceiling height: 2,9m

Stage barriers

It is not possible to request stage barriers at the venue; we can however provide one or two guards to secure the stage.

Stage power (Guest)

- 3x 1x10A DK or schuko power outlets (Backline)
- 2x 3x16A CEE power outlets

Sound

We provide the following sound equipment:

PA system MAIN (pr. side):

1x d&b 24S-D tops
1x d&b 21S subs
1x AMP: d&b D40

PA system FILLS:

1x d&b 10S centerfill
+ some minor fills used for podiums and such.
1x AMP: d&b D10

Monitor system (8 sends):

10x d&b MAX monitors
2x AMP: d&b D20

FOH:

1x Allen&Heath C1500 + CDM48 (48ch system)

Microphones:

2x Shure B52
2x Shure B91A
6x Shure SM57
4x sE V7
4x Shure B58a
6x Sennheiser e604
2x Sennheiser e609
2x Røde NT-5
2x AKG C214
2x AKG C451B

Line Drivers:

12x LD DI
2x Palmer PAN04 passiv DI

Wireless microphones:

We don't have any wireless equipment

Stands:

12x High stands
8x Low stands
6x Upright stands
4x Note stands
4x Guitar stands

Backline:

If you need us to supply local backline equipment, please contact us in advance.

Multicore

Platform K stage provides following sound connections between FOH and stage for your production:

4x CAT6a S/FTP lines
12x AUX lines (XLR)

FOH

Front of house is placed 6 meters from the stage in centre position.

Light

We provide the following light equipment:

- 1x Chamsys MagicQ M50 desk
- 4x DMX lines between FOH and stage
- 2x CAT6a S/FTP lines between FOH and stage

DMX	Fixture	Mode
1-001	ADJ ENCORE FR50z	4
1-005	ADJ ENCORE FR50z	4
1-009	ADJ ENCORE FR50z	4
1-013	ADJ ENCORE FR50z	4
1-017	ADJ Mega HEX par RGBWA UV	8
1-025	ADJ Mega HEX par RGBWA UV	8
1-033	ADJ Mega HEX par RGBWA UV	8
1-041	ADJ Mega HEX par RGBWA UV	8
1-049	ADJ Mega HEX par RGBWA UV	8
1-057	ADJ Mega HEX par RGBWA UV	8
1-065	ADJ Mega HEX par RGBWA UV	8
1-073	ADJ Mega HEX par RGBWA UV	8
1-081	Martin RUSH MH5 Profile	16
1-097	Martin RUSH MH5 Profile	16
1-113	Martin RUSH MH5 Profile	16
1-129	Martin RUSH MH5 Profile	16
1-511	Smoke: Stairville Hz-200 Hazer	2

ATTENTION: BRING FLOOR PRODUCTIONS ONLY

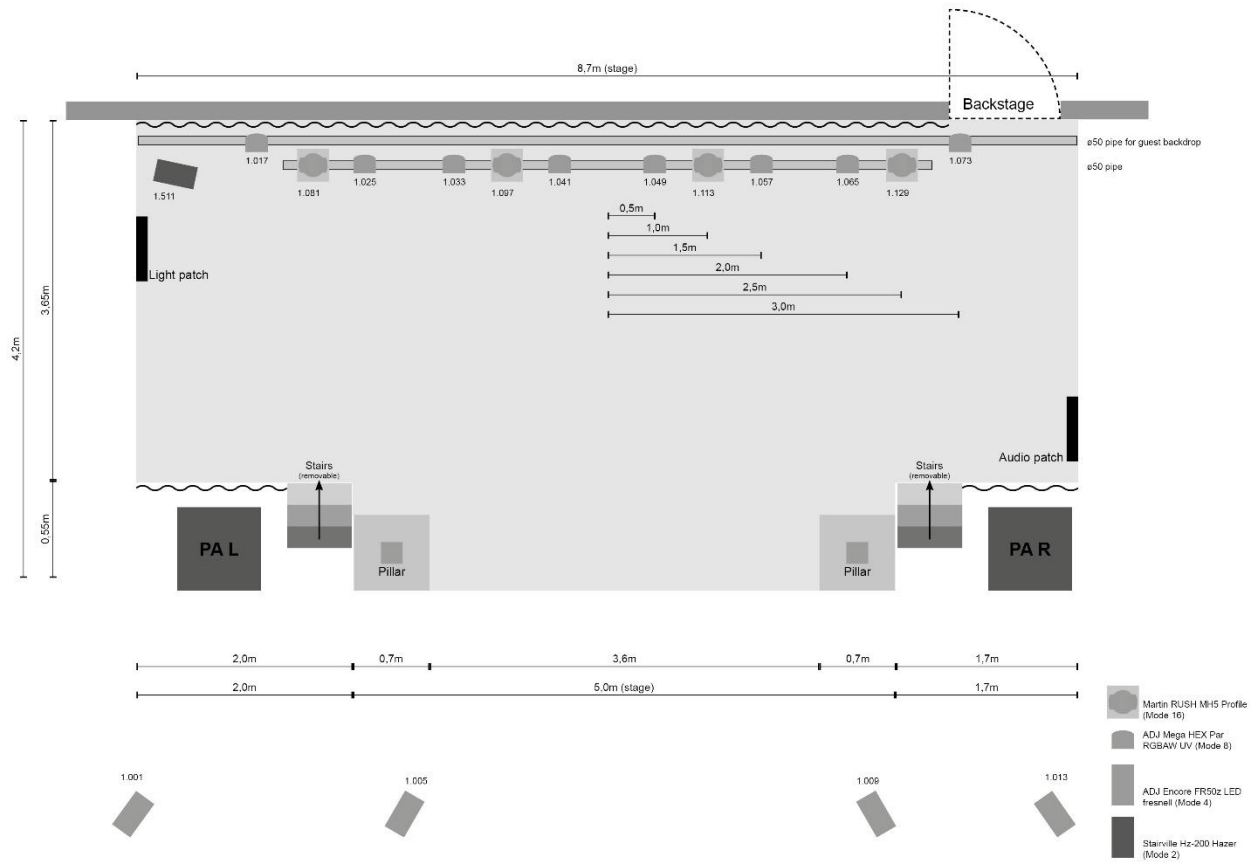
At our venue, there is no room for rigging lights in the ceiling. You are welcome to use our house lights, and then bring your own floor production. However, there is not much room on the stage, so try to decrease your footprint as much as possible.

Scenography

We provide the following equipment:

- 6x 2x1m risers with 0.2m or 0.4m legs and drapes
- 8x 1.0m legs for DJ podiums

Light plot



AV & Specials

Projector: Epson EB-W29 (3000 lumen)

Screen: 2860mm x 1700mm

Confetti: We like confetti, but it takes a lot of time to clean up. Please let us know in advance if you expect to use confetti.

Pyrotechnics: If your production would like to use of pyrotechnics at your show, this must be cleared with the local fire department at least 4 weeks prior to the show. According to Danish law, the permission to use pyrotechnics must be applied for by the head of pyrotechnics from your production, and not by the venue. Contact our preproduction manager to achieve contact information to the local fire department.

Pictures



Load-in dock (On the right side of the building)



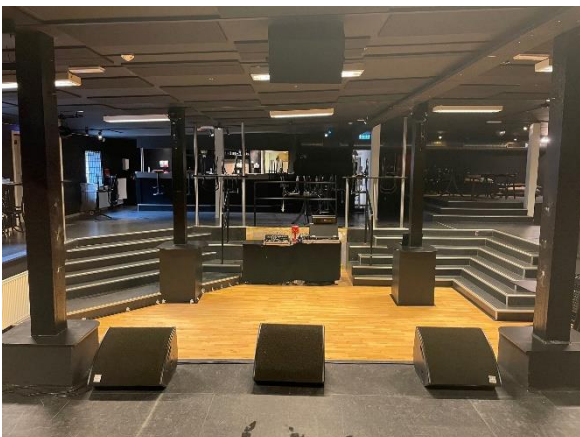
Load-in dock



The Stage



View from FOH to stage



View from stage



Backstage kitchen